



### Highlights

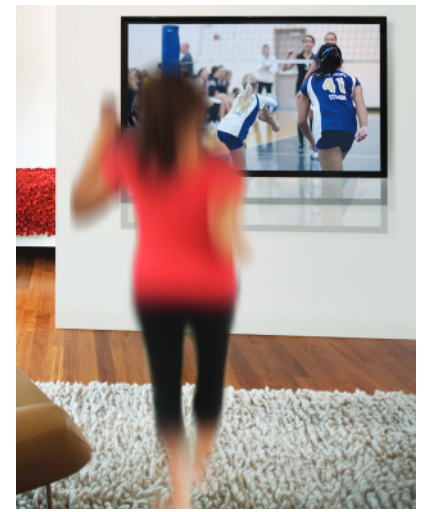
- Lift, lower and tilt for the perfect picture and comfortable viewing
- Display/TV moves with only a light touch with patented CF™ Technology
- Discreet mounting hardware nearly disappears
- Raise TV during standing activities; lower while sitting
- Display/TV mounts close to the wall and out of the way
- Lift n' Lock™ for quick installation
- Easy to use – simple installation and effortless operation
- Ratchet-free tilting




**ERGOTRON®**

## Glide Wall Mount LD-X, HD and VHD



Effortlessly lift, lower and tilt your large TV or display for the perfect picture and the most comfortable viewing. This revolutionary design delivers unprecedented height adjustability in an extremely low profile module and easily tilts up to 10° to alleviate glare. Our patented Constant Force™ (CF) technology lets you position your large display with a simple, light touch—move down for viewing while sitting and up for standing. The Glide Wall Mount is also ideal for gaming and entertaining.



|  |  |  |  |
|--|--|--|--|
|  | <b>Glide Wall Mount LD-X</b>   | <b>Glide Wall Mount HD</b>   | <b>Glide Wall Mount VHD</b>  |
| Part # (color)   | 61-113-085 (black)   | 61-061-085 (black)   | 61-128-085 (black)   |
| Typical LCD Size   | 27–42"   | 30–60"   | ≥ 46"  |
| LCD SIZE IS APPROXIMATION. DIMENSION IS DIAGONAL MEASUREMENT OF SCREEN.<br>LCD SIZE MAY BE EXCEEDED AS LONG AS SCREEN WEIGHT DOES NOT EXCEED MAXIMUM WEIGHT CAPACITY OF THE MOUNT. |  |  |  |
| Weight Capacity  | 12–30 lbs (5,4–13,6 kg)  | 20–40 lbs (9–18 kg)  | 45–70 lbs (20,4–32 kg)   |
| Lift   | 10" (25,4 cm)  | 18" (46 cm)  | 16" (40,6 cm)  |
| Tilt   | 10°  | 10°  | 10°  |
| VESA   | MIS-D/E/F<br>See website for details   | MIS-E/F<br>See website for details   | MIS-D/E/F<br>See website for details   |
| Depth  | 4.5" (11,4 cm)   | 2" (5 cm)  | 2.7" (6,9 cm)  |
| Warranty   | 5 years  | 5 years  | 5 years  |
| Shipping Dimensions  | 19.3" x 12.2" x 4.3" (49 x 31 x 11 cm)   | 32.25" x 18" x 5" (82 x 46 x 12,5 cm)  | 29" x 20.7" x 4" (77 x 54 x 11 cm)   |
| Shipping Weight  | 9.3 lbs (4,2 kg)   | 30 lbs (13,5 kg)   | 36.4 lbs (16,5 kg)   |



© 2015 Ergotron, Inc. rev. 01/19/2015/EA Literature made in US  
Content is subject to change without notification

#### Americas Sales and Corporate Headquarters

St. Paul, MN USA  
(800) 888-8458  
+1-651-681-7600  
www.ergotron.com  
sales@ergotron.com

#### EMEA Sales

Amersfoort, The Netherlands  
+31 33 45 45 600  
www.ergotron.com  
info.eu@ergotron.com

#### APAC Sales

Tokyo, Japan  
www.ergotron.com  
apaccustomerservice@ergotron.com

#### Worldwide OEM Sales

www.ergotron.com  
info.oem@ergotron.com

**ERGOTRON®**